



**Helps
you deliver**
beyond wound care

Mextra® Superabsorbent



Challenges with exuding wounds

Working with patients suffering from highly exuding wounds can be a long, weary and intense process.

Exudate management plays an essential role in moist wound healing¹. Chronic wounds with high levels of exudate can result in malodour, peri-wound skin damage and strikethrough, which can have a major impact on a patient's quality of life.

Highly exuding wounds present challenges to both clinicians and patients, and need to be managed effectively to create the optimal wound healing environment.

What is exudate?

Exudate is simply another word for the fluid that leaks from a wound. It is the body's natural response to tissue injury, and is part of the inflammatory phase of healing.¹

- Exudate is essential for moist wound healing²
- It promotes cell growth and proliferation
- It supports the removal of dead tissue through autolysis
- Exudate consists of various of substances, including water, electrolytes, nutrients, inflammatory mediators, white cells, protein-digesting enzymes, growth factors and waste products¹



Venous leg ulcers are commonly associated with high exudate levels.

Maceration

Overexposure to exudate can deteriorate the healthy margins of the wound and lead to enlargement.³



Examples of maceration on leg ulcers.

IMPROVED

Mextra® Superabsorbent

– a good environment for healing



High⁵
RETENTION

Increased⁴
+15%
ABSORPTION

Excellent⁴
61% confirm*
CONFORMABILITY

✓ Increased **absorption**

The upgraded Mextra® Superabsorbent absorbs 15%** more exudate⁴ than the former dressing. Increased fluid absorption reduces the number of dressing changes, treatment costs and the risk of skin maceration⁵.

✓ High **retention**

Mextra Superabsorbent absorbs wound exudate and locks it in. High retention reduces the number of dressing changes, treatment costs and the risk of leakage.⁵

✓ Improved **conformability**

The upgraded Mextra Superabsorbent has softer borders and is more conformable⁶. Improved conformability makes it easier to apply and means that it fits along the contours of your patient's body better⁵.

*100% of the professional caregivers who responded after having a hands-on inspection of Mextra Superabsorbent rated its new conformability as good or higher, with as many as 61% of them rating it as excellent.

Dressing combinations

For venous leg ulcers and diabetic foot ulcers



Example of venous leg ulcer.



Example of diabetic foot ulcer.



Mextra® Superabsorbent
Superabsorbent dressing with a fluid repellent backing.



Mepilex® Transfer
Thin and conformable exudate transfer dressing with Safetac®*.



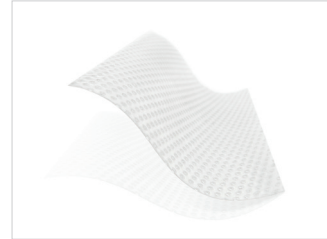
Mextra® Superabsorbent
Superabsorbent dressing with a fluid repellent backing.

*A unique proprietary technology exclusive to Mölnlycke Health Care.

For diabetic foot ulcers



Example of diabetic foot ulcer.



Mepitel® One
Wound contact layer coated with Safetac®* on one side.



Mextra® Superabsorbent
Superabsorbent dressing with a fluid repellent backing.

Fixation with Tubifast® or Mefix®



Tubifast®
Lightweight tubular retention bandage.



Mefix®
Secure and skin-friendly fixation tape.

Compression bandages can be used where appropriate.

Application guides

Mepitel® One + Mextra® Superabsorbent

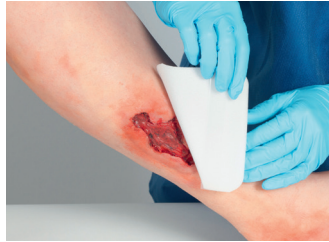


Clean the wound area and select a suitable size of Mepitel One. Remove the release film and apply Mepitel One to the wound.



Apply Mextra Superabsorbent* on top of Mepitel One with the white side of the dressing face down.

Mepilex® Transfer + Mextra® Superabsorbent



Clean the wound area and select a suitable size of Mepilex Transfer, it should overlap the surrounding skin by at least 5cm. Remove the release film and apply Mepilex Transfer to the wound.



Apply Mextra Superabsorbent* on top of Mepilex Transfer with the white side of the dressing face down.

Mextra® Superabsorbent – used as primary dressing



Clean the wound area and select a suitable size of Mextra Superabsorbent. Apply Mextra Superabsorbent* directly on the wound area with the white side of the dressing face down.

Fixation with Tubifast® or Mefix®



Secure with a Tubifast bandage. Choose the correct width of bandage and cut to length. Stretch the Tubifast over the affected area and position to cover the dressing.



Secure with Mefix. Cut to appropriate size and separate the two parts of the protection paper. Remove the narrow part and apply to the skin. Remove the remaining protection paper. Firmly smooth the Mefix. Do not stretch the Mefix when applying.

*For best results, the dressing should overlap the dry surrounding skin by at least 2cm.

Compression bandages can be used where appropriate.

Order information

Mextra® Superabsorbent (sterile packed)

Art. No	Size cm	Size inch	Pcs/shelf cont.	Pcs/transp. cont.
610000	12.5x12.5	5 x 5	10	50
610100	12.5x17.5	5 x 7	10	40
610200	12.5x22.5	5 x 9	10	90
610300	17.5x22.5	7 x 9	10	40
610400	22.5x27.5	9 x 11	10	40
610500	22.5x32.5	9 x 13	10	50
610600	22.5x42.5	9 x 17	10	50

Mepitel® One (sterile packed)

Art. No	Size cm	Size inch	Pcs/shelf cont.	Pcs/transp. cont.
289100	5 x 7.5	2x3	10	70
289300	7.5x10	3x4	10	40
289500	10 x 18	4x7	10	70
289700	17x25	6.8x10	5	40
289750	27.5x50	10.8x19.7	2	14
289800	9.5x150 (roll)	3.7x59	1	9

Mepilex® Transfer (sterile packed)

Art. No	Size cm	Size inch	Pcs/shelf cont.	Pcs/transp. cont.
294800	15x20	6x8	5	40
294502	20x50	8x20	2	12
294600	7.5x8.5	3x3.3	5	70
294700	10x12	4x4.7	5	50
294800	15x20	6x8	5	40
294502	20x50	8x20	2	12
294600	7.5x8.5	3x3.3	5	70

Tubifast®

Product	Art. No	Width cm x Length m	Limb cm	Pcs/shelf cont.
Red Line Small limbs	2480	3.5 x 1	9-18	12
	2434	3.5 x 10	9-18	1
Green Line Small and medium limbs	2481	5 x 1	14-24	12
	2485	5 x 3	14-24	6
	3555	5 x 5	14-24	6
	2436	5 x 10	14-24	1
Blue Line Large limbs	2482	7.5 x 1	24-40	12
	2486	7.5 x 3	24-40	6
	3556	7.5 x 5	24-40	6
	2438	7.5 x 10	24-40	1
Yellow Line Extra-large limbs, heads, children's trunks	2483	10.75 x 1	35-64	12
	2487	10.75 x 3	35-64	6
	3557	10.75 x 5	35-64	6
	2440	10.75 x 10	35-64	1
Purple Line Adult trunks	2479	20 x 1	64-130	12
	3558	20 x 5	64-130	6
	2444	20 x 10	64-130	1

Mefix®

Art. No	Width cm x Length m	Width in x Length yd	Pcs/transp. cont.
310250	2,5x10	1x11	39
310500	5x10	2x11	20
311000	10x10	4x11	20
311500	15x10	6x11	20
312000	20x10	8x11	10
313000	30x10	12x11	10
310570	5x2,5	2x2.7	36
311070	10x2,5	4x2.7	18
311570	15x2,5	6x2.7	12

Let the new Mextra® Superabsorbent help you deliver beyond wound care

- ✓ Increased absorption – can lead to fewer dressing changes, reduced treatment costs and helps you deliver **increased comfort** to your patients.
- ✓ High retention – can lead to fewer dressing changes, reduced treatment costs and helps you deliver **more confidence** to your patients.
- ✓ Improved conformability – makes the dressing easier to apply, fits better to body contours and helps you deliver **more mobility** to your patients.

We believe the benefits of the upgraded Mextra® Superabsorbent will help you deliver an overall increased quality of life to your patients. Furthermore, they can give you greater job satisfaction.

References:

1. Romanelli M, Vowden K, Weir D (2010) Exudate Management Made Easy. Wounds International 2010; 1(2)
2. White R, Cutting K (2006) Modern Exudate Management: a Review of Wound Treatments. World Wide Wounds.
3. Charlesworth et al (2014) Dressing-related trauma: clinical sequelae and resource utilization in a UK setting. ClinicoEconomics and Outcomes Research 2014, 6:227-239.
4. Mölnlycke Health Care Laboratory report no: PD-522474, 2016 (unpublished).
5. Tickle, J., Fletcher, J. Mextra Superabsorbent made easy. Wounds UK 2012; 8 (4): 1-4.
2. Wiegand, C., Hipler, U.C. In vitro evaluation of MMP binding capacity of a superabsorbent dressing and the reduction of collagenase activity. Poster presentation at European Wound Management Association conference, Copenhagen, Denmark, 2013.
6. Mölnlycke Health Care Survey report no: PD-522187 Rev: 00, 2016 (unpublished).

Find out more at www.molnlycke.com

Mölnlycke Health Care AB, Box 13080, Gamlestadvägen 3C, SE-402 52 Göteborg, Sweden. Phone + 46 31 722 30 00.

The Mölnlycke®, Mextra®, Mepitel®, Mepilex®, Safetac®, Tubifast® and Mefix® trademarks, names and logotypes are registered globally to one or more of the Mölnlycke Health Care Group of Companies. © 2016 Mölnlycke Health Care AB.

All rights reserved. HQWC0124

